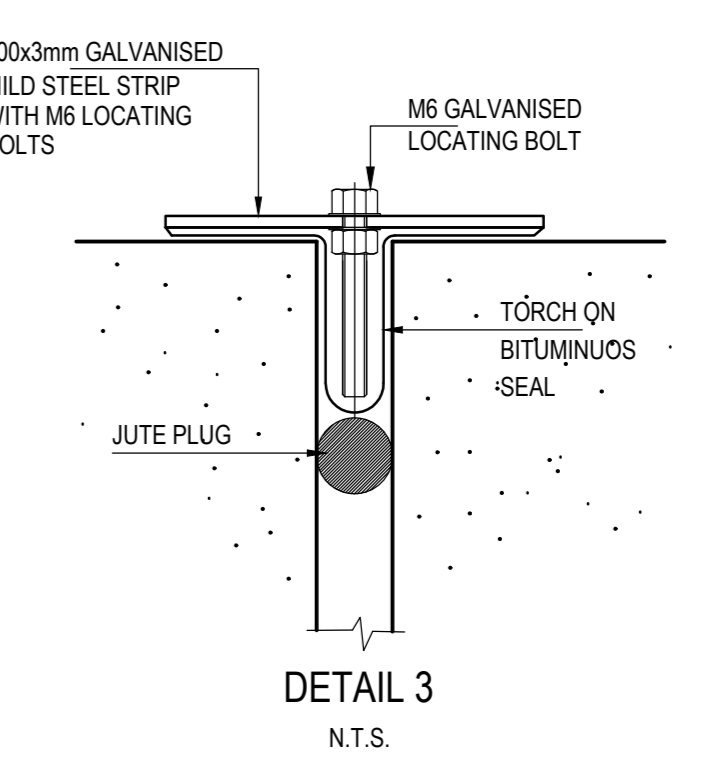
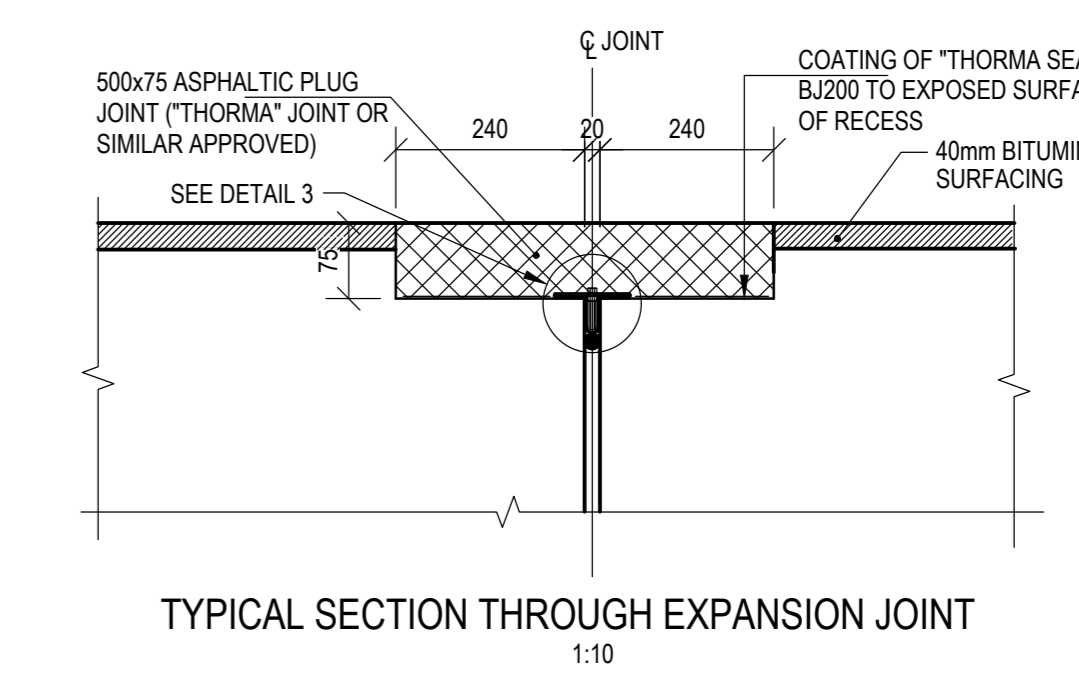
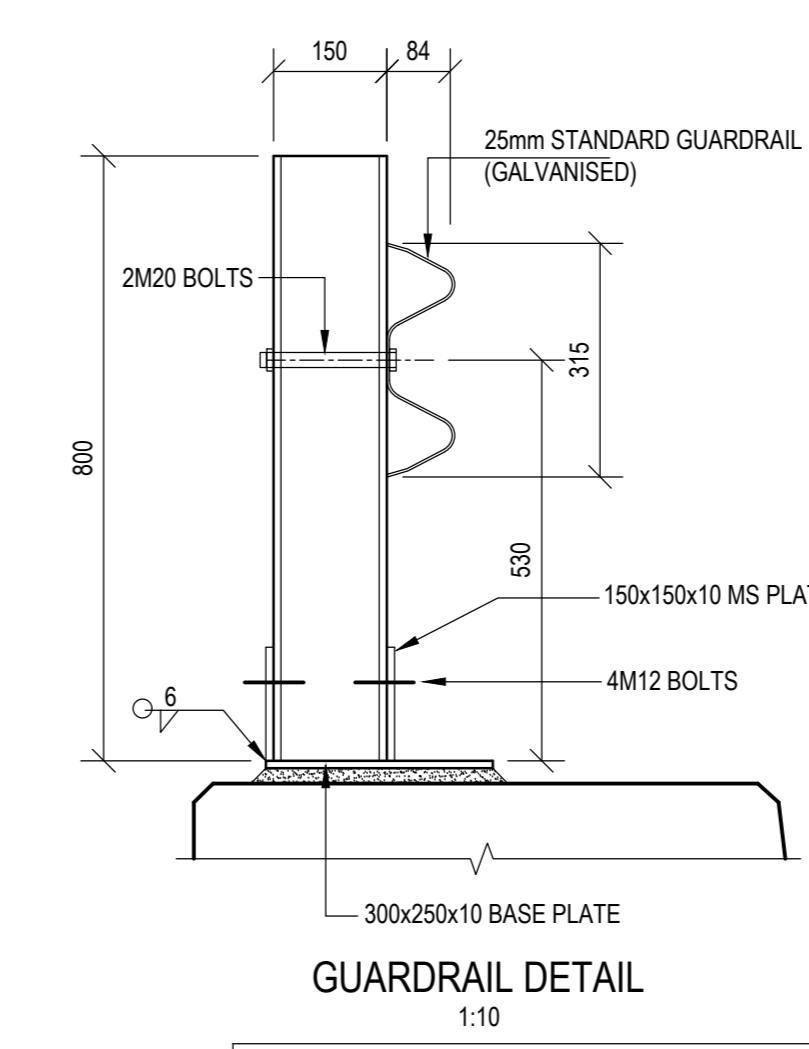
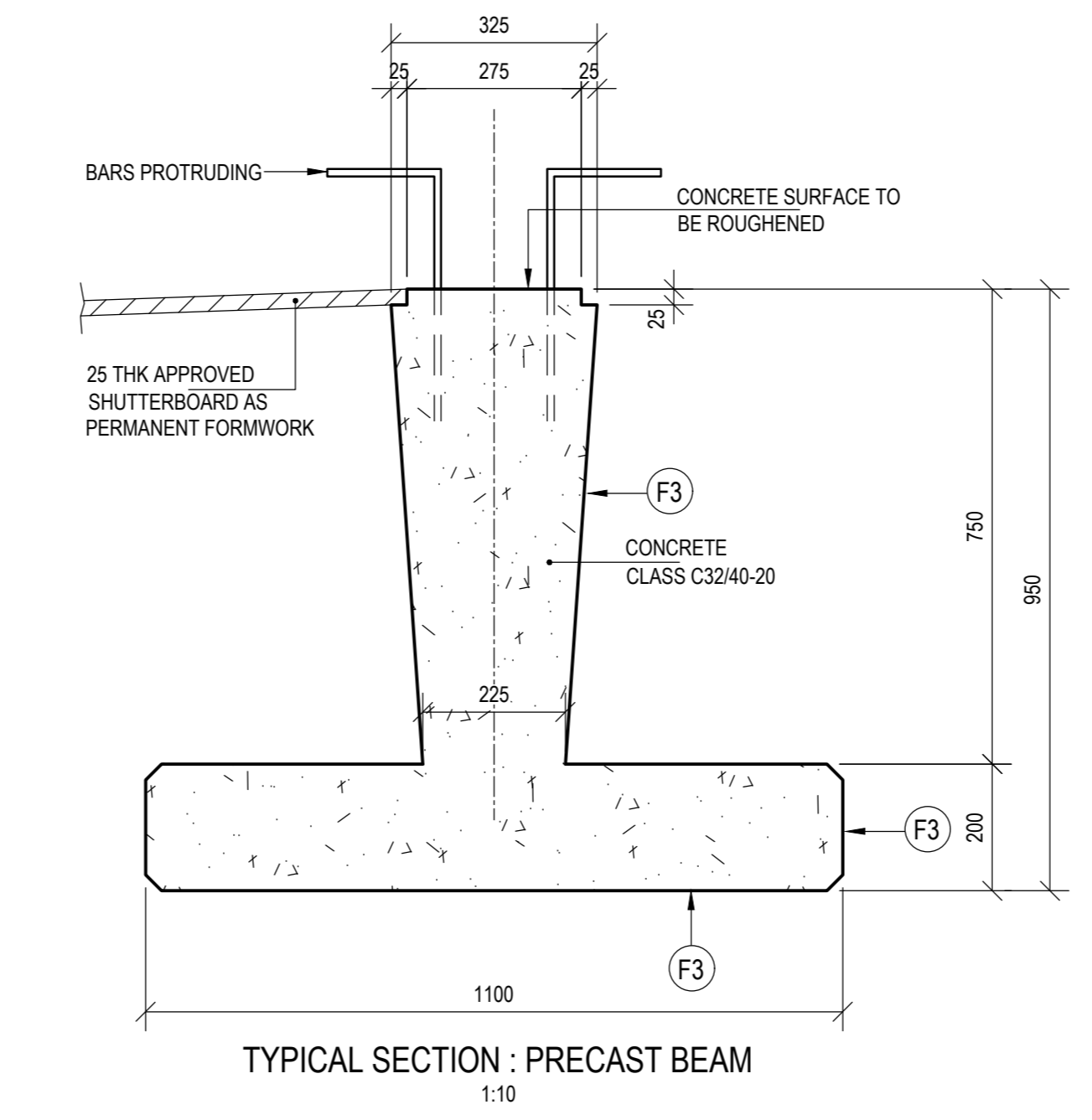
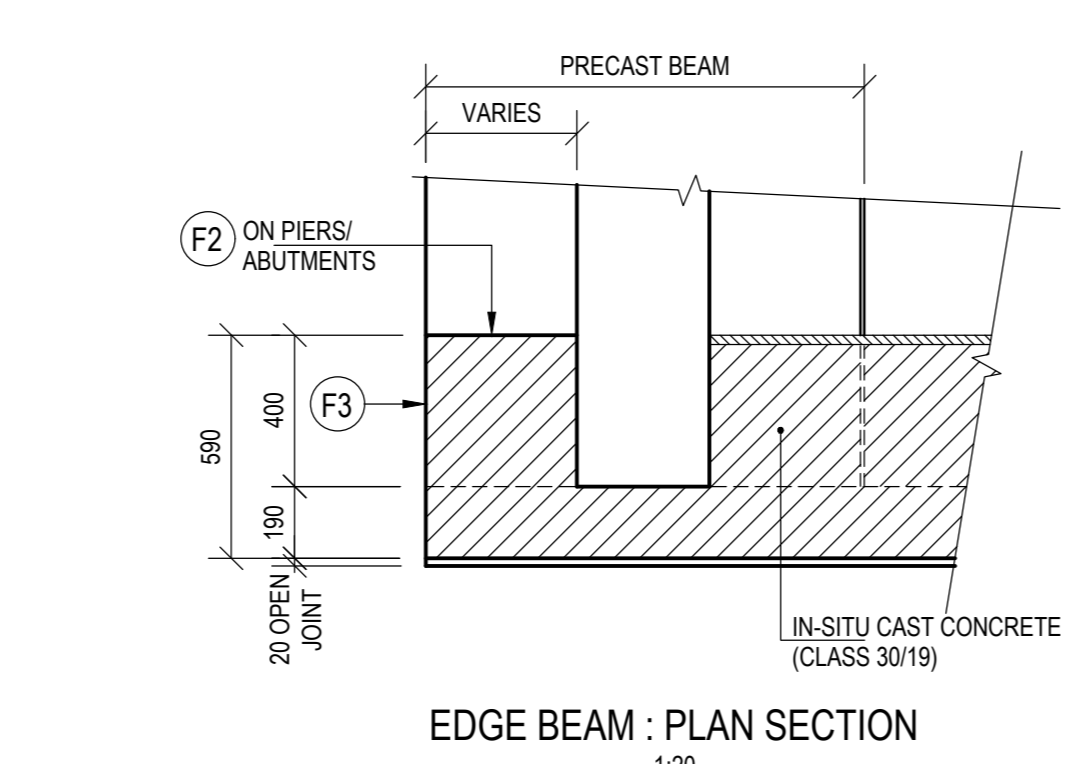
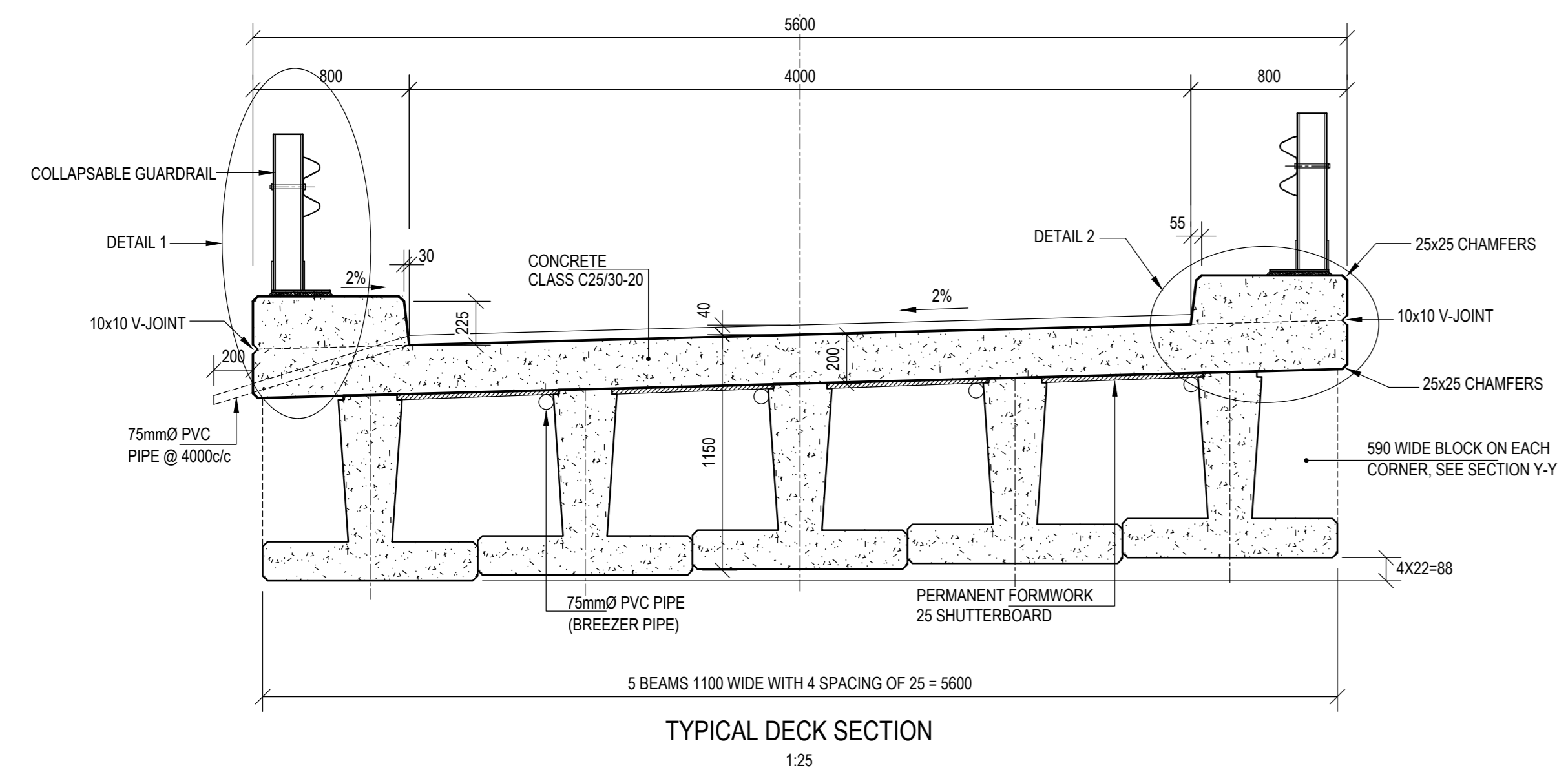


POSITION	TOP LEVEL BEARING PLUNTHS				
	L1	L2	L3	L4	L5
ABUTMENT A	432.95	432.47	432.439	432.461	432.483
PIER 1 DECK 1	432.967	432.589	432.611	432.633	432.655
PIER 1 DECK 2	432.975	432.597	432.619	432.641	432.663
PIER 2 DECK 1	432.747	432.369	432.391	432.413	432.435
PIER 2 DECK 3	432.755	432.377	432.399	432.421	432.443
ABUTMENT D	432.627	432.849	432.871	432.893	433.015

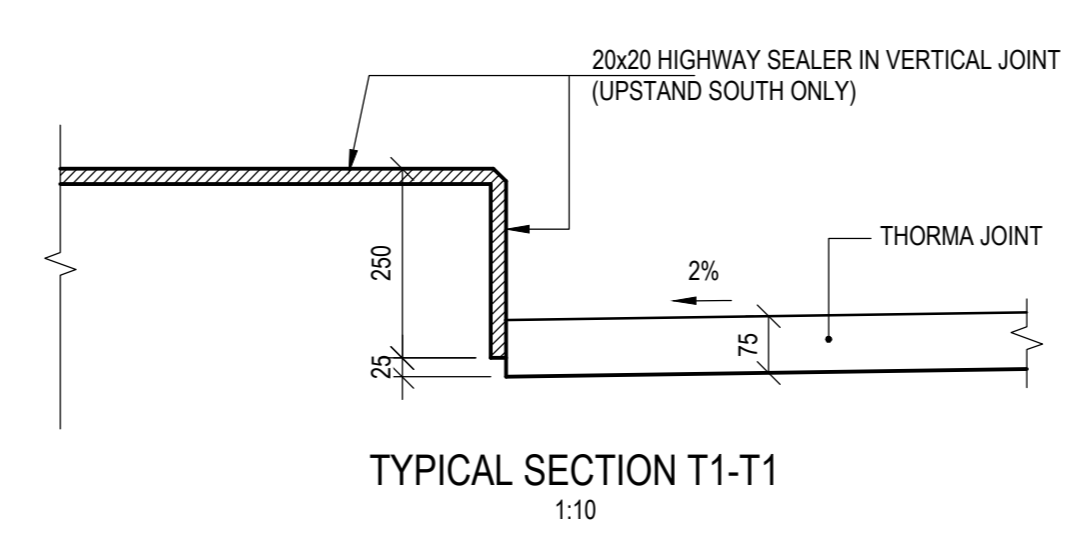
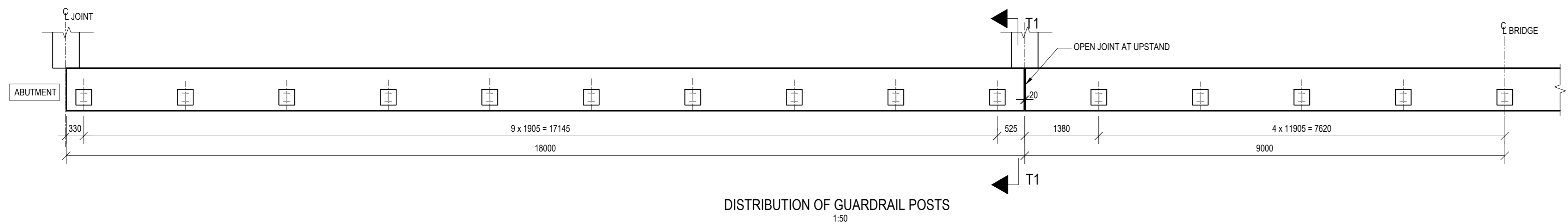
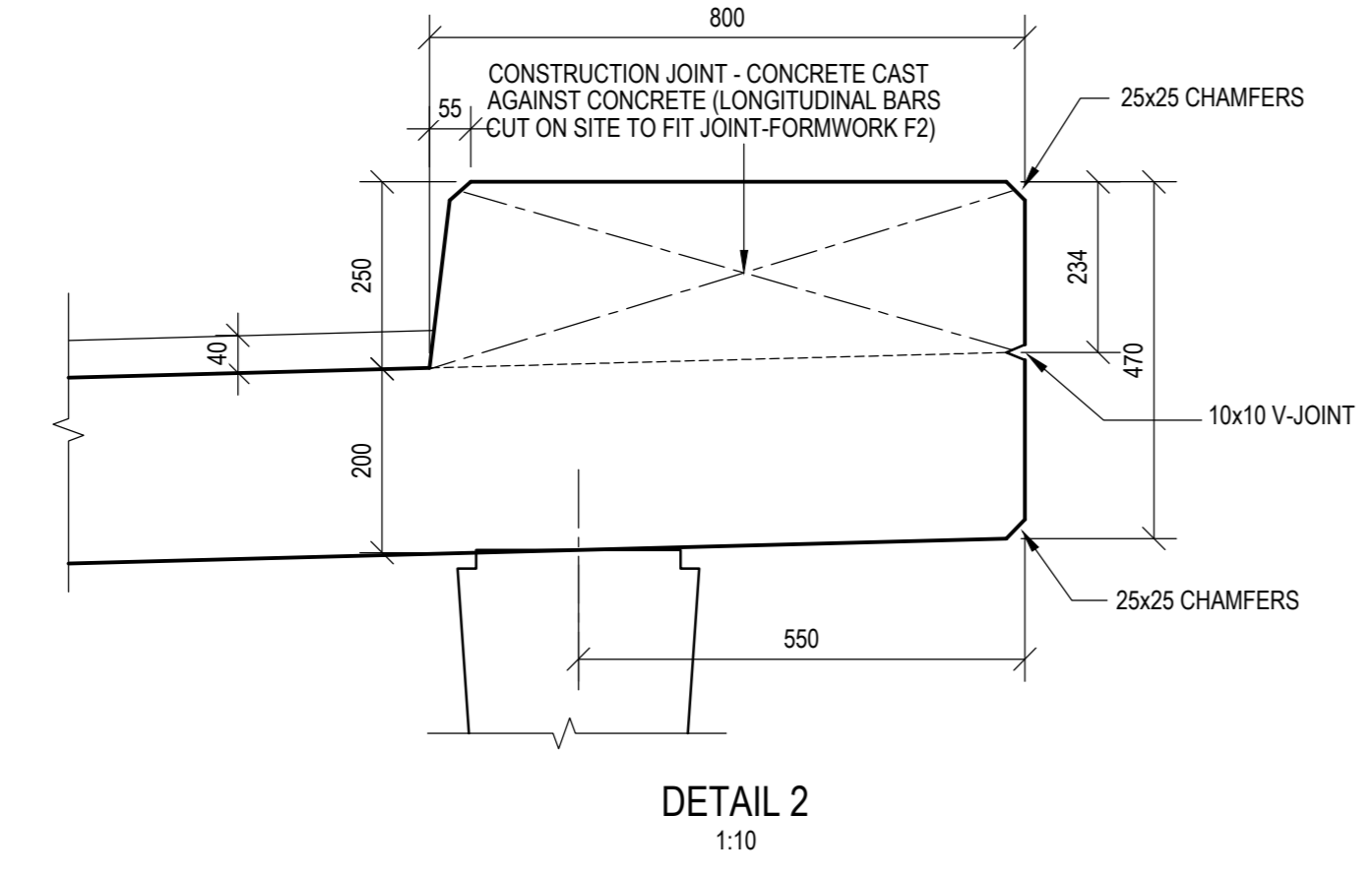
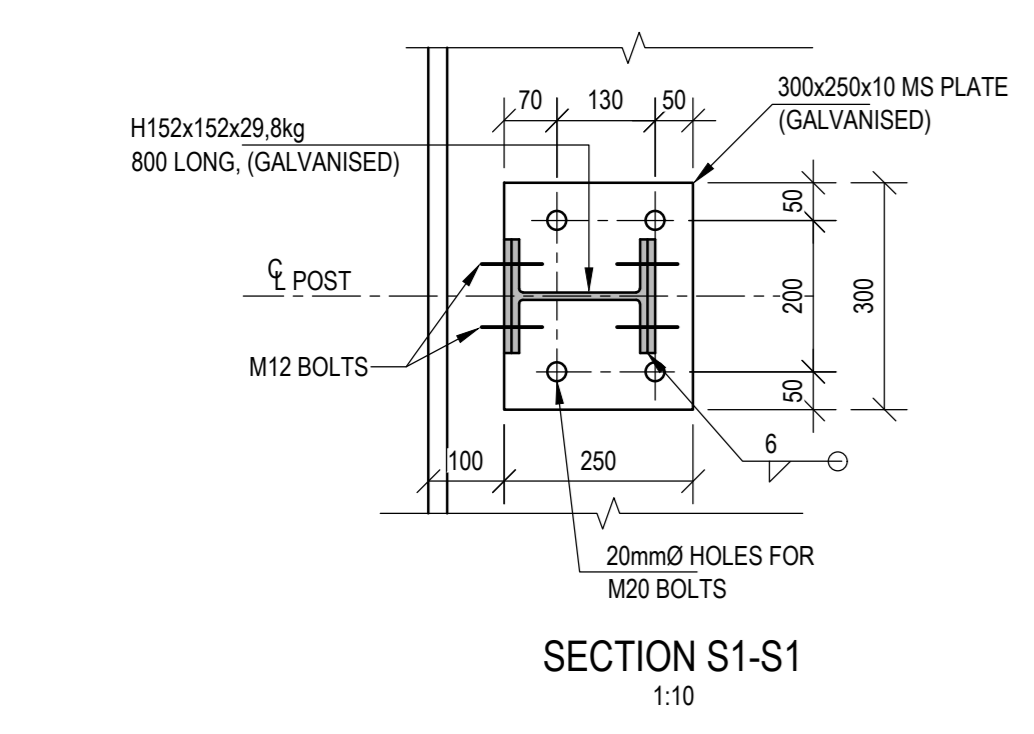
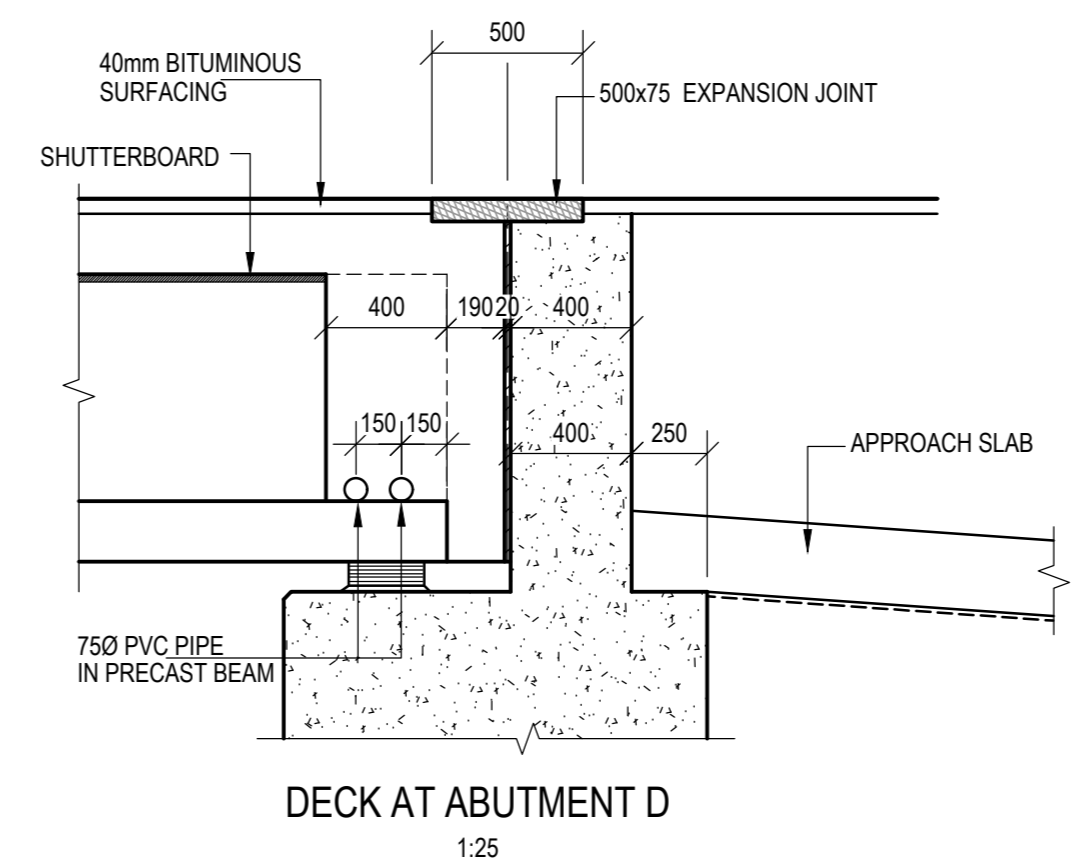
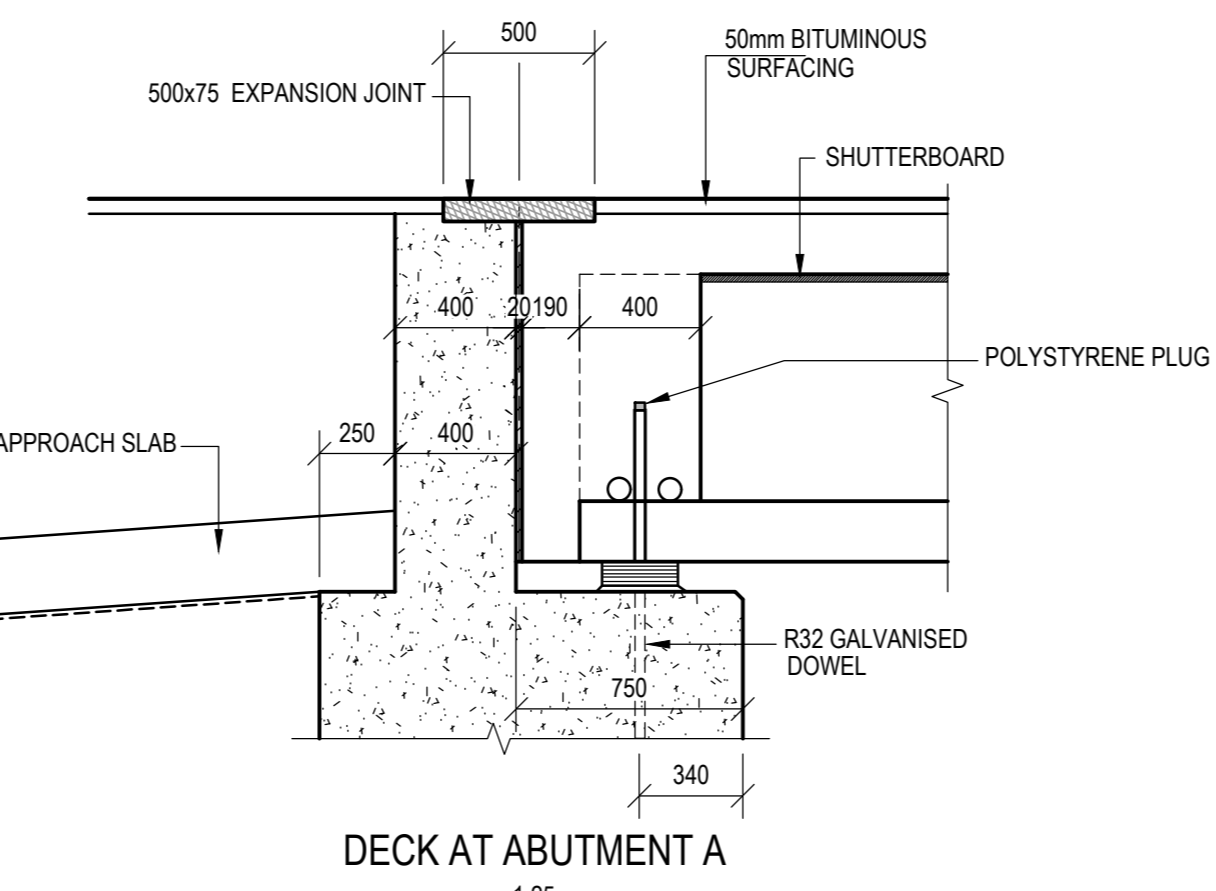
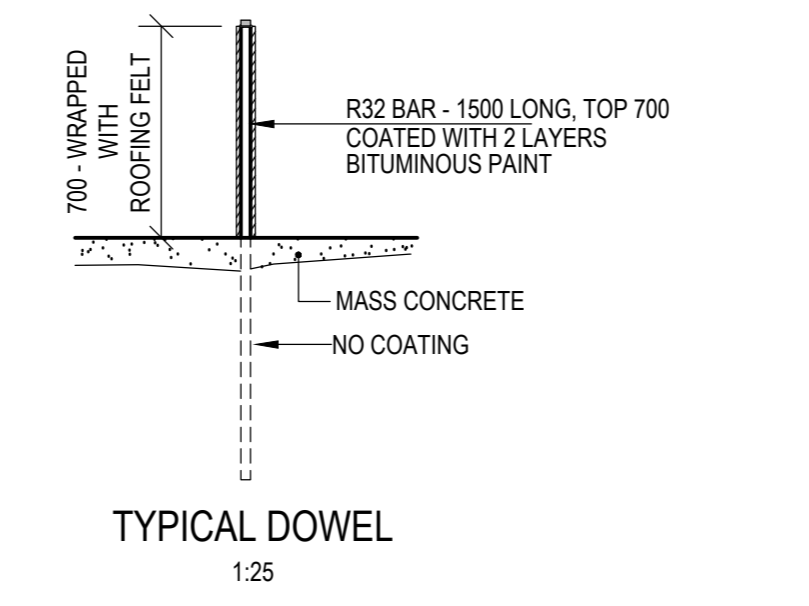
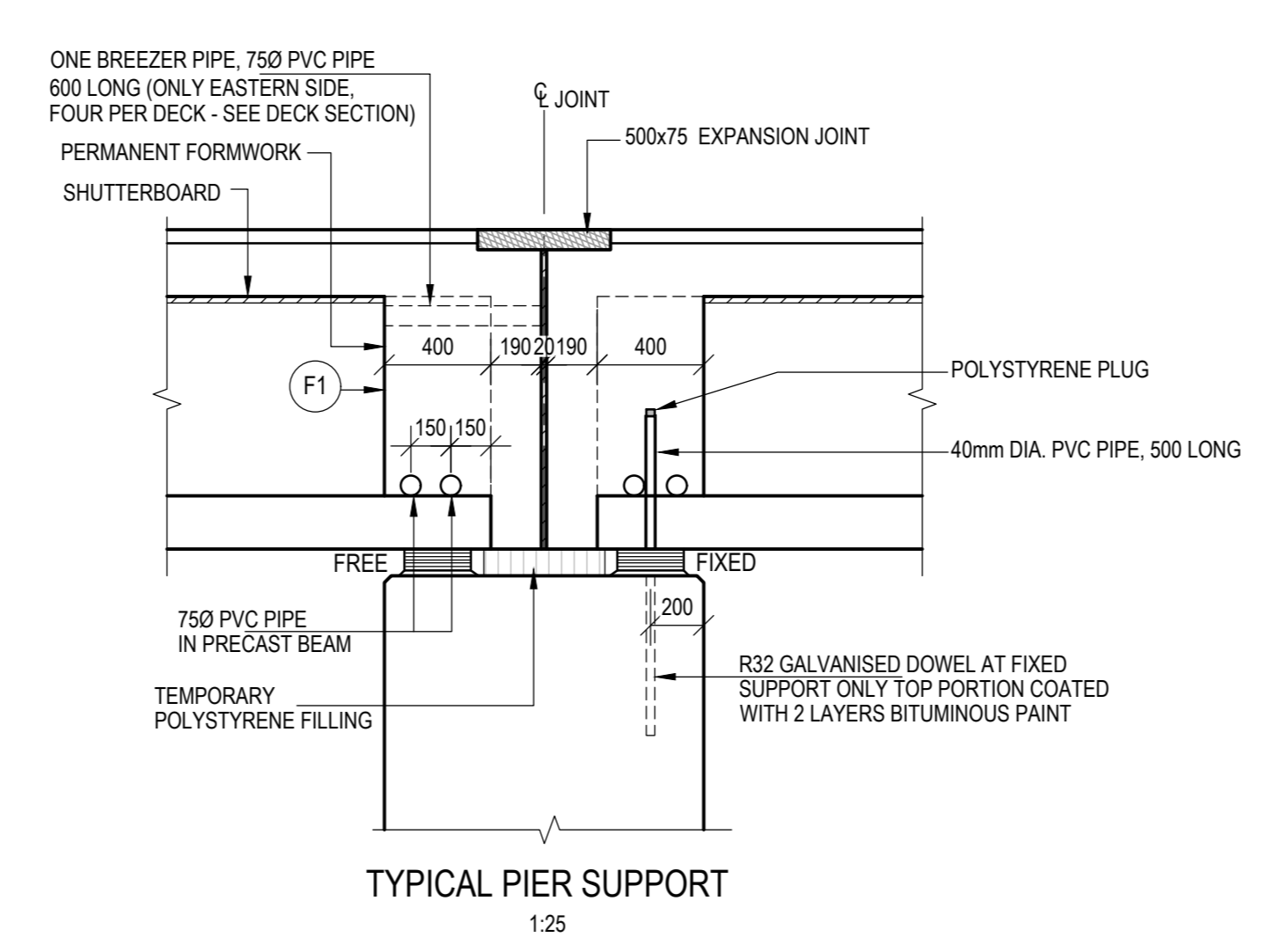
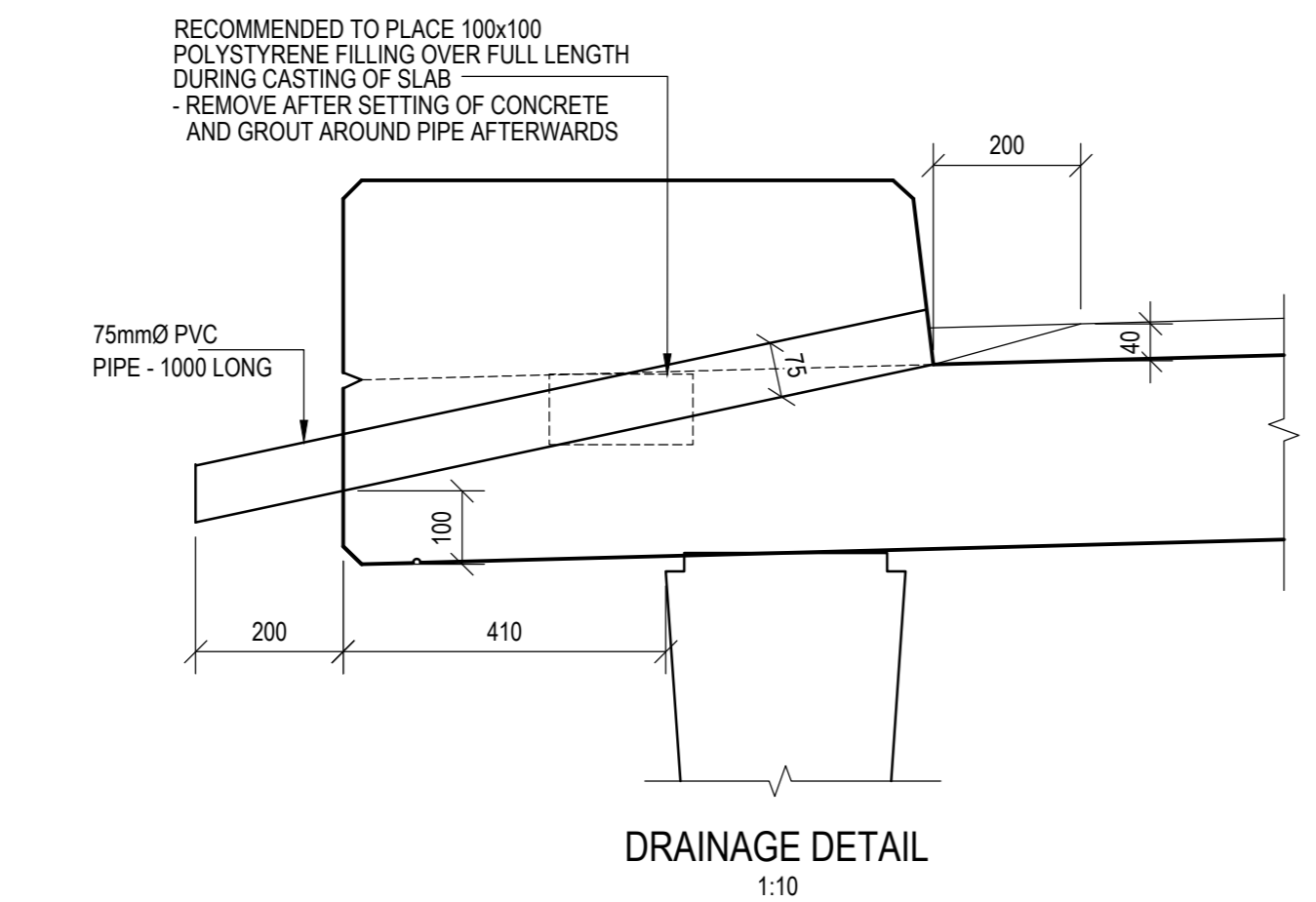
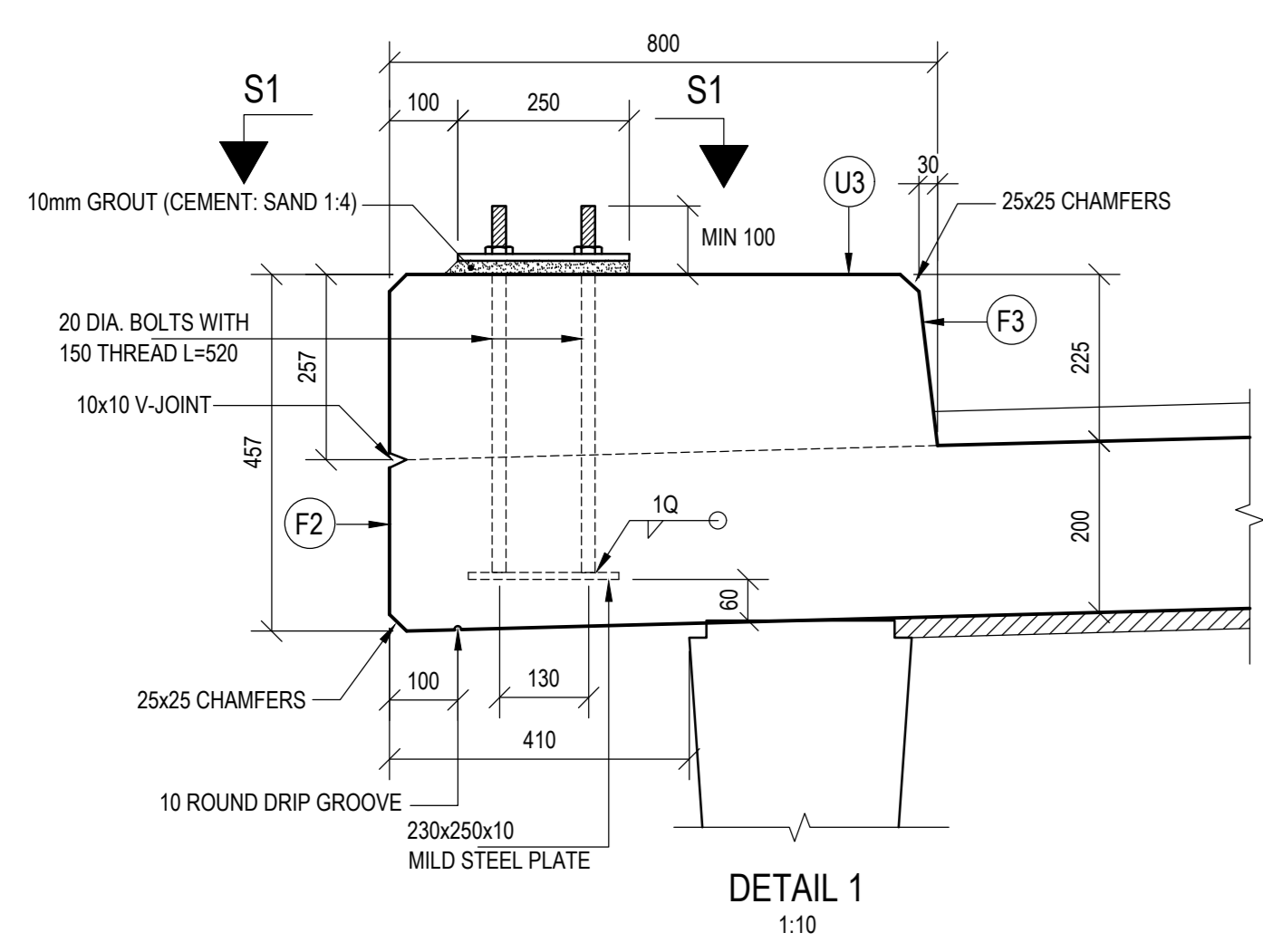
- BEARING NOTES:**
- ALL BEARINGS TO BE PLACED HORIZONTALLY.
 - APPLIED LOADS ARE SERVICE LOADS.
 - ALL BEARINGS MUST BE ABLE TO WITHSTAND 0.8RAD. ROTATION IN LONGITUDINAL DIRECTION.
 - THE MAXIMUM HORIZONTAL FORCE IN BEARING IS 30kN.
 - BEARINGS MUST BE COVERED WITH A 3mm THICK ELASTOMERIC LAYER.
 - ELASTOMERIC IRHD HARDNESS = 60°.
 - ALL BEARINGS ARE TYPE 300x290x74mm.

BEARING DATA

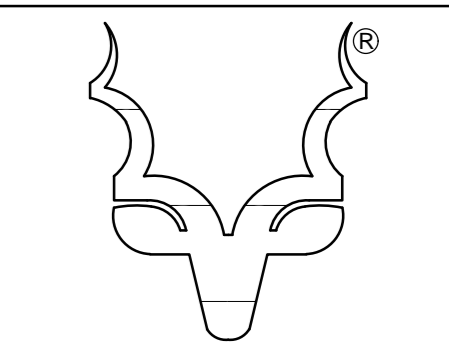
WIDTH	LENGTH	NO. OF ELASTOMERIC LAYERS	THICKNESS LAYERS	NO. OF 3mm STEEL PLATES	TOTAL THICKNESS	DEAD LOAD	LIVE LOAD	MAX. HORIZONTAL MOVEMENT
300mm	250mm	5	10mm	6	74mm	293kN	498kN	+6mm/-6mm



- NOTES: ASPHALTIC PLUG-JOINT (THORMA OR SIMILAR):**
- JOINT TO BE PLACED ACCORDING TO MANUFACTURER SPECIFICATIONS.
 - MAX. EXPECTED EXPANSION GAP = 31mm.
 - MAX. MOVEMENT = 16mm.
 - EXPANSION GAP WIDTH AT TIME OF INSTALLATION OF JOINT BASED ON 20mm AT 20°C.



No.	Date	Revision	Initial
01	AUG 24	FOR TENDER	LH



South African NATIONAL PARKS

Project SHANGONI - ROAD PROJECT

Client KRUGER NATIONAL PARK

Drawing BRIDGE B1 DECK CONCRETE DETAILS

Scale: AS SHOWN Drawn: D VENTER, L HEPKEMA

Checked: A. NYAMBI Date: MAY 2020

Drawing No. KNP-B1-04 Rev. 01

This drawing and design is copyright and must not be reproduced in part or in whole without prior written consent. Contractors must verify all dimensions on site before commencing work or preparing shop drawings.